

FEBRUARY, 1987

# A PLAT OF STUART WEST, P.U.D. PHASE III B

BEING A PORTION OF SECTION 13,  
TOWNSHIP 38 SOUTH, RANGE 39 EAST  
MARTIN COUNTY, FLORIDA

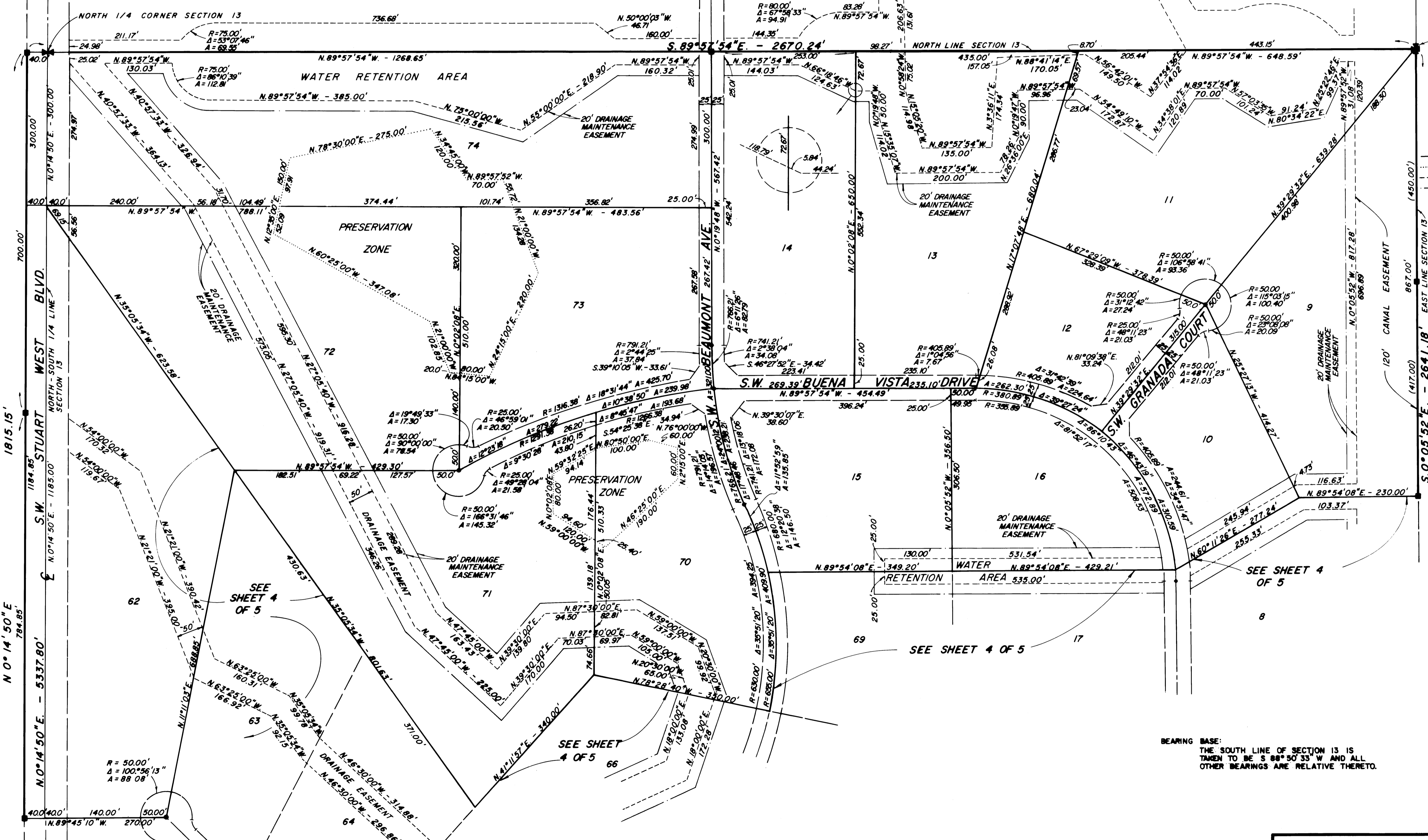
STUART WEST PHASE I  
PLAT BOOK 8, PAGE 37  
MARTIN COUNTY, FLA.

I, MARSHA STILLER, CLERK OF THE CIRCUIT COURT OF MARTIN COUNTY, FLORIDA, HEREBY CERTIFY THAT THIS PLAT WAS FILED FOR RECORD IN PLAT BOOK 10, PAGE 70, MARTIN COUNTY, FLORIDA, PUBLIC RECORDS, THIS DAY OF \_\_\_\_\_ A.D., 1987.

MARSHA STILLER, CLERK  
CIRCUIT COURT  
MARTIN COUNTY, FLORIDA

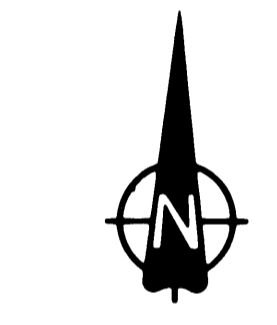
BY \_\_\_\_\_  
DEPUTY CLERK

FILE NO. \_\_\_\_\_

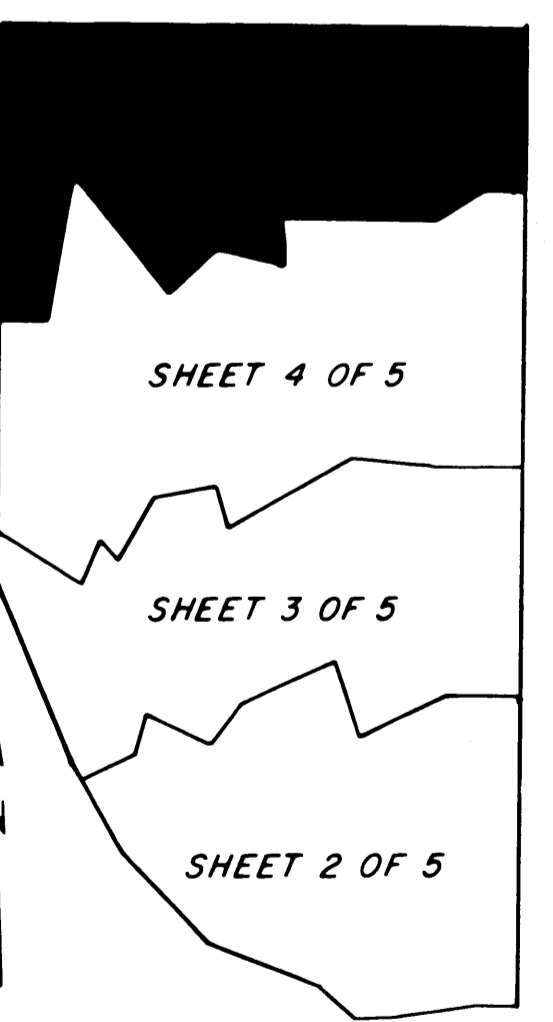


**LEGEND**

- ACCESS AND UTILITY EASEMENT
- MARSH PRESERVATION AREA
- DRAINAGE EASEMENT
- 20' DRAINAGE MAINTENANCE EASEMENT
- PERMANENT REFERENCE MONUMENT
- PERMANENT CONTROL POINT (SET)



SCALE = 1" = 100'



BEARING BASE:  
THE SOUTH LINE OF SECTION 13 IS  
TAKEN TO BE S 88° 50' 33" W AND ALL  
OTHER BEARINGS ARE RELATIVE THERETO.

LINDAHL, BROWNING, FERRARI & HELLSTROM, INC.  
CONSULTING ENGINEERS, PLANNERS & SURVEYORS  
P.O. BOX 727 10 CENTRAL PARKWAY, SUITE 109  
JUPITER, FLORIDA 33480-0727 STUART, FLORIDA 32989  
117 SOUTH SECOND STREET  
FORT PIERCE, FLORIDA 34980